

Metastable liquid-liquid phase transition in a single-component system with only one crystal phase and no density anomaly

G. Franzese,^{1,2,*} G. Malescio,³ A. Skibinsky,¹ S. V. Buldyrev,¹ and H. E. Stanley¹¹*Center for Polymer Studies and Department of Physics, Boston University, Boston, Massachusetts 02215*²*Dipartimento di Ingegneria dell'Informazione, Seconda Università di Napoli, Istituto Nazionale Fisica della Materia UdR Napoli and CG SUN, I-81031 Aversa, Italy*³*Dipartimento di Fisica, Università di Messina and Istituto Nazionale Fisica della Materia, I-98166 Messina, Italy*

(Received 7 November 2001; revised manuscript received 6 September 2002; published 27 November 2002)

We investigate the phase behavior of a single-component system in three dimensions with spherically-symmetric, pairwise-additive, soft-core interactions with an attractive well at a long distance, a repulsive soft-core shoulder at an intermediate distance, and a hard-core repulsion at a short distance, similar to potentials used to describe liquid systems such as colloids, protein solutions, or liquid metals. We showed [Nature (London) **409**, 692 (2001)] that, even with no evidence of the density anomaly, the phase diagram has two first-order fluid-fluid phase transitions, one ending in a gas–low-density-liquid (LDL) critical point, and the other in a gas–high-density-liquid (HDL) critical point, with a LDL-HDL phase transition at low temperatures. Here we use integral equation calculations to explore the three-parameter space of the soft-core potential and perform molecular dynamics simulations in the interesting region of parameters. For the equilibrium phase diagram, we analyze the structure of the crystal phase and find that, within the considered range of densities, the structure is independent of the density. Then, we analyze in detail the fluid metastable phases and, by explicit thermodynamic calculation in the supercooled phase, we show the absence of the density anomaly. We suggest that this absence is related to the presence of only one stable crystal structure.

DOI: 10.1103/PhysRevE.66.051206

PACS number(s): 61.20.Gy, 65.20.+w, 64.70.Ja, 64.60.My

I. INTRODUCTION

Soft-core potentials have been widely used to study a variety of systems such as liquid metals, metallic mixtures, electrolytes, and colloids, as well as anomalous liquids, such as water and silica [1–15]. In these models, the specific structural characteristic at the molecular (or atomic) level is neglected and the molecules (or atoms) are represented by simple spheres. Quantum effects (such as the quantum nature of chemical interactions) and classical effects (such as the Coulomb interaction) are modeled through a phenomenological isotropic pair potential. The advantages of this approach are that while these potentials are simple enough to be treated analytically [16], they still allow a qualitative comparison with the experiments. Moreover, they can be studied by means of numerical simulations less time consuming than those of realistic models [17].

We consider an off-lattice model in three dimensions (3D) [11] related to the soft-core potentials studied by Hemmer and Stell [2] for solid-solid critical points. Our model shows a phase diagram with two fluid-fluid phase transitions, a feature recently seen in experiments on phosphorus [18] and confirmed by specific simulations [19]. In Ref. [11] we showed that both first-order fluid-fluid phase transitions end in critical points, a low-density critical point C_1 and a high-density critical point C_2 . For the considered potential, both transitions occur in the supercooled phase with respect to the crystal phase.

The hypothesis of a second critical point has been proposed [20] as a way to rationalize the density anomaly—i.e., the expansion upon isobaric cooling—in network-forming fluids, such as water [1,20,21], carbon [22], silica [23] and silicon [24]. Consequently, both the experimental [25–29] and the theoretical [7–10,13–15,30,31] investigations about the possibility of a second critical point have been focused on systems with the density anomaly [Fig. 1(a)]. However, the results of Ref. [11] have shown that the presence of the critical point C_2 does not necessarily induce the density anomaly, indicating that the quest for simple liquids with two critical points is not restricted to systems with densities exhibiting anomalous behavior [Fig. 1(b)]. In this paper we push forward the analysis, by studying the equilibrium phase diagram and showing that the system introduced in Ref. [11] has one stable crystalline phase, in the range of considered densities, suggesting that the absence of density anomalies is related to the presence of only one stable crystal structure.

To reach this goal we organize the work in the following way. After the definition of our soft-core potentials (Sec. II), (i) we describe in detail the integral equations in the hypernetted chain (HNC) approximation (Sec. III A) and (ii) we perform additional calculations using different assigned parameters for the pair potential, thus establishing a bridge between the potential studied in Ref. [11] and the potential investigated in Refs. [10,15] and rationalizing how—in addition to the critical point C_1 —the critical point C_2 arises as a function of the parameters of the pair potential (Sec. III B). Then, (iii) we describe in detail the molecular dynamics (MD) simulations, studying the equilibrium phase diagram and finding that the only stable crystal structure, in the range of simulated densities, has two characteristic lattice distances (Sec. IV A). (iv) By MD simulations we analyze also the

*Present address: SMC, Dipartimento di Fisica, Università “La Sapienza,” P.le A. Moro 2, I-00185 Roma, Italy. Electronic address: franzese@na.infn.it

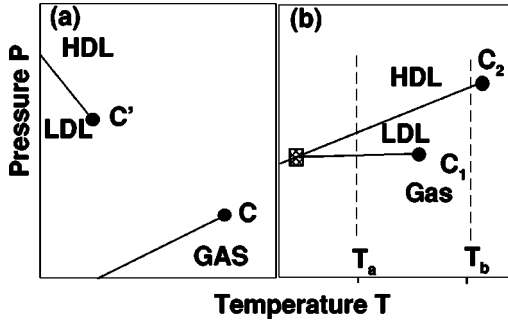


FIG. 1. Schematic pressure-temperature P - T phase diagrams with two critical points. Solid lines represent first-order phase transition lines, circles represent critical points. (a) Phase diagram with critical point C between the gas and the uniform liquid phase at high T and low P and critical point C' between the low-density liquid (LDL) and the high-density liquid (HDL) at low T and high P . This phase diagram has been proposed for water and has been shown to be consistent with the density anomaly. (b) Phase diagram with critical point C_1 between the gas and the LDL at low T and low P and the critical point C_2 between the gas and the HDL at high T and high P . Increasing P at constant temperature T_a below C_1 (dashed line at T_a), the system undergoes a first-order phase transition between the gas and the LDL phase, followed by a first-order phase transition between the LDL and the HDL phases. Increasing the pressure at constant temperature T_b above C_1 but below C_2 (dashed line at T_b), the system undergoes only a first-order phase transition between the gas and the HDL. The square represents the gas-LDL-HDL triple point. This phase diagram has been found in Ref. [11] and shows no evidence of the density anomaly.

supercooled liquid phase and the metastable fluid-fluid phase transition (Sec. IV B); (v) in order to construct an accurate phase diagram and to study the finite size effect, we perform some extra MD simulations in addition to the calculations presented in Ref. [11] (Sec. IV C). Hence, (vi) we study the radial distribution function, comparing the HNC predictions with the MD results and analyzing the composition of the system within the fluid-fluid coexisting regions (Sec. V). Finally, (vii) we address the density anomaly issue by presenting the explicit thermodynamic calculation, based on the MD phase diagram, that allows us to exclude the presence of the density anomaly (Sec. VI). We give our conclusions in Sec. VII.

II. SOFT-CORE POTENTIALS

Among the isotropic potentials, much attention has been devoted to soft-core potentials, which have a finite (soft-core) repulsion added to the infinite (hard-core) repulsion. The infinite repulsion is due to the impenetrability of the spheres. The finite repulsion represents the combination of all the quantum and classical repulsive effects averaged over the angular part. It has been shown [4] that a weak effective repulsion can be derived by a first-principles calculation for liquid metals [3]. To understand the possibility of the solid-solid critical point in such material as Ce and Cs, Hemmer and Stell [2] proposed a soft-core potential with an attractive interaction at large distances, performing an exact analysis in 1D. Over the past 30 years, several other soft-core potentials

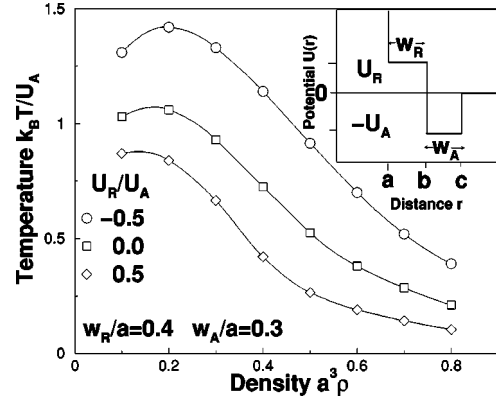


FIG. 2. Instability line of the HNC equations in 3D in the ρ - T plane for the pair potential in Eq. (1), with $w_R/a=0.4$, $w_A/a=0.3$, and (from top to bottom) $U_R/U_A=-0.5$, 0.0 , 0.5 . For $U_R/U_A=-0.5$, the pair potential recovers that studied in 1D and 2D in Refs. [10,15]. The symbols represent the calculations and the lines are guides for the eye. Inset: the isotropic pairwise-additive potential $U(r)$ as a function of the interparticle distance r ; a is the hard-core distance, b is the soft-core distance, c is the maximum attractive distance, $-U_A < 0$ is the attractive energy, and U_R is the repulsive energy.

with one or more attractive wells were proposed and studied with approximate methods, or numerical simulations in 2D, to rationalize the properties of liquid metals, alloys, electrolytes, colloids, and the water anomalies [1–8,10–15]. It has been recently shown [11], in 3D with MD, that an appropriate soft-core potential with an attractive well is able to show two supercooled liquids of different densities, with two critical points. Similar results have been reported for a soft-core potential with a linear repulsive ramp by Monte Carlo simulations [14].

Following Ref. [11], we define the isotropic pair potential $U(r)$, as a function of the pair distance r (inset in Fig. 2):

$$U(r) = \begin{cases} \infty & \text{for } r < a, \\ U_R & \text{for } a \leq r < b, \\ -U_A & \text{for } b \leq r < c, \\ 0 & \text{for } c \leq r, \end{cases} \quad (1)$$

where a is the hard-core distance and b is the soft-core distance. For $a \leq r < b$, the spheres interact with a finite (soft-core) repulsive energy U_R . For $b \leq r < c$, the pair's interaction is attractive with energy $-U_A < 0$. The distance c is the cutoff radius beyond which the pair's interaction is considered negligible. For sake of comparison with Refs. [10,15], we will consider both $U_R > 0$ and $U_R < 0$.

The steplike shape in Eq. (1) has the advantage of being defined by only three parameters: the width of the soft core in units of the hard-core distance $w_R/a \equiv (b-a)/a$, the width of the attractive well in the same units $w_A/a \equiv (c-b)/a$, and the soft-core energy in units of the attractive well energy U_R/U_A . To explore the phase diagram of the model as a function of these three parameters in an approximate, yet fast, way we use the integral equations in the HNC approximation.

III. THE INTEGRAL EQUATIONS IN THE HYPERNETTED CHAIN APPROXIMATION

In this section we present details of the integral equations and the HNC approximation adopted in Ref. [11] and in this work. The radial distribution function $g(r)$ plays a central role in the physics of fluids [16]. This quantity is proportional to the probability of finding a particle at a distance r from a reference particle and is the ratio of local to bulk density at distance r , with

$$g(r) \equiv \frac{n(r)}{4\pi r^2 \rho}, \quad (2)$$

where $n(r)$ is the number of particles at a distance between r and $r+dr$ from the reference particle and ρ is the number density, assumed to be independent of r (uniform system). The radial distribution function goes to 1 for large r and is always 1 for a random spatial distribution of particles. To represent deviations from randomness, the *total* pair correlation function $h(r) \equiv g(r) - 1$ is introduced.

These functions are relevant because they are directly measurable by radiation scattering experiments and are related to the thermodynamic properties of the fluid. A fundamental relation between structure and thermodynamics is given by

$$k_B T \rho K_T = 1 + \rho \int h(\vec{r}) d\vec{r}, \quad (3)$$

where $K_T \equiv (\partial \rho / \partial P)_T / \rho$ is the isothermal compressibility, P is the pressure, and k_B is the Boltzmann constant. Provided that the particles interact through pairwise-additive forces, other thermodynamic properties of the fluid—such as the internal energy—can be expressed using integrals over the pair correlation function.

The function $h(r)$ is the result of the interaction of all the particles in the system. Formally, $h(r)$ can be decomposed into (i) the contribution coming from the *direct* interaction between two particles at distance r , called $c(r)$, and (ii) the contribution due to the *indirect* interaction propagated through any other particle in the system. This second contribution is written in turn as an integral convolution of direct correlations and total pair correlation.

This decomposition, for uniform systems, is expressed by the Ornstein-Zernike relation

$$h(r) = c(r) + \rho \int c(r') h(|\vec{r} - \vec{r}'|) d\vec{r}'. \quad (4)$$

Equation (4) is also the formal definition of $c(r)$. Both $h(r)$ and $c(r)$ in Eq. (4) are unknown functions, thus to solve this equation, one needs another relation (*closure*) between these two functions. This relation is provided by the diagrammatic expansion of $g(r)$ [16], which, after formal summation, yields the functional relation

$$g(r) = \exp[-\beta U(r) + h(r) - c(r) + d(r)], \quad (5)$$

where $U(r)$ is the interparticle potential, $\beta \equiv 1/(k_B T)$ and $d(r)$ is the sum over a specific class of diagrams (*bridge diagrams*) [16]. Since $d(r)$ cannot be calculated exactly, one resorts to approximate expressions. The simplest approximation assumes $d(r) = 0$ (HNC closure) [32]. One expects this approximation to work better at lower ρ , where the direct correlation function $c(r)$ is more relevant than the correlation propagated through the other particles. However, our results (see Sec. V) will show that this intuitive observation is not straightforward, at least for soft-core potentials.

A. The iterative procedure

The solution of the integral equations (4),(5) with the HNC closure is obtained through a numerical iterative procedure whose essential scheme is the following. Under the assumption $d(r) = 0$, one can write $g(r)$ as

$$g(r) = \exp[-\beta U(r) + \theta(r)], \quad (6)$$

where the function $\theta(r) \equiv h(r) - c(r)$ has the remarkable property of being a continuous function of r , even for discontinuous potentials (as in this paper). From the definitions of $h(r)$, $\theta(r)$ and Eq. (6), one can derive the equation

$$c(r) = \exp[-\beta U(r) + \theta(r)] - \theta(r) - 1. \quad (7)$$

By using the Fourier transform $\hat{f}(\vec{q}) \equiv \int f(\vec{r}) \exp(i\vec{q} \cdot \vec{r}) d\vec{r}$ defined for a generic function $f(\vec{r})$, from Eq. (4) we obtain

$$\hat{h}(q) = \hat{c}(q) + \rho \hat{c}(q) \hat{h}(q). \quad (8)$$

Or, using the definition of $\theta(r)$, we have

$$\hat{\theta}(q) = \rho \frac{\hat{c}^2(q)}{1 - \rho \hat{c}(q)}. \quad (9)$$

The numerical iteration is based on Eqs. (7) and (9).

We start by choosing an initial guess for $\theta(r)$. A reasonable input, at least at high temperatures, is the $\theta(r)$ of a fluid of hard spheres with diameter a . In fact, at high temperatures our potential can be approximated with a simple hard-core repulsion. We can calculate the corresponding $\theta(r)$ by making use of the Percus-Yevick integral equation [16], which for hard spheres can be solved analytically. Next, at constant ρ , we decrease the temperature of δT and we perform calculations at fixed ρ and T by using as input the $\theta(r)$ obtained as a solution at ρ and $T + \delta T$.

From the chosen guess of $\theta(r)$ we calculate $c(r)$ by using Eq. (7). Its Fourier transform $\hat{c}(q)$ is used in Eq. (9) to calculate $\hat{\theta}(q)$. Its inverse Fourier transform provides a new $\theta(r)$ that is used as a new input for the next cycle. We evaluate the functions on $M = 2048$ discrete points $r_m = m \delta r$, with $m = 1, \dots, M$ and $\delta r = 0.01a$. Successive iterations of the elementary cycle define a succession $\theta^{(k)}(r)$, where $k = 1, 2, \dots$ is the number of the iteration. If the difference between two consecutive elements of this succession,

$$\Delta \equiv \left[\frac{1}{M} \sum_m^M [\theta^{(k+1)}(r_m) - \theta^{(k)}(r_m)]^2 \right]^{1/2}, \quad (10)$$

decreases for increasing k , the succession converges towards a $\theta^*(r)$ that is the solution of our integral equations. The iteration process is stopped when $\Delta \leq 10^{-7}$.

Based on this iterative procedure, different algorithms can be used to improve the accuracy and rapidity of convergence of the numerical solution of HNC equations. However, independent of the algorithm used, there exists a region in the ρ - T plane where no solution can be found, i.e., for any ρ , there is a T below which the numerical algorithm does not converge, defining an *instability line* in the ρ - T plane.

B. The HNC instability line

The nature of the locus of instabilities of the HNC equation and its relationship with the spinodal line of the fluid was investigated for a hard-core potential plus an attractive Yukawa tail in a number of papers [33,34]. These studies showed that the isothermal compressibility does not diverge as the temperature is lowered and the instability region is approached from above. This conclusion was definitively assessed through extensive numerical calculations [35] both for the hard-core Yukawa fluid and other model potentials, showing that this behavior is directly correlated to the existence of multiple HNC solutions. The analysis developed was based on a careful treatment of the low- k behavior of the Fourier transforms of the correlation functions required by the iterative procedure. A further theoretical support to these results was given by an analysis [36] on models for an ionic fluid and a monoatomic Lennard-Jones fluid.

In the light of the above mentioned studies, an identification of the instability line of the HNC equation with the spinodal line of the fluid, which is characterized by a diverging compressibility, is not possible. Keeping in mind this limitation, one can nevertheless observe that for a large number of simple fluid pair potentials the shape of the instability line qualitatively resembles the region of spinodal decomposition of the fluid. Also for our potential the comparison of the HNC calculations with the MD results (Sec. V) shows that the HNC instability line is qualitatively consistent with the spinodal line [37]. Thus, studying the modifications of the instability line as the potential parameters are varied can yield some approximate, yet useful, information on the phase behavior of the fluid.

C. The results

First, we calculate the instability line of the HNC equations for the potential investigated in Refs. [10,15]. The corresponding parameters are $w_R/a=0.4$, $w_A/a=0.3$, and $U_R/U_A=-0.5$. In this case, the soft core is given by two attractive wells with different depths. Calculations in 1D and 2D [10,15] have shown a waterlike density anomaly. Therefore, it is interesting to analyze the phase diagram in 3D. However, the instability line for this case (Fig. 2) is similar to the spinodal line usually exhibited by a simple fluid, e.g., interacting via a Lennard-Jones potential with the maximum

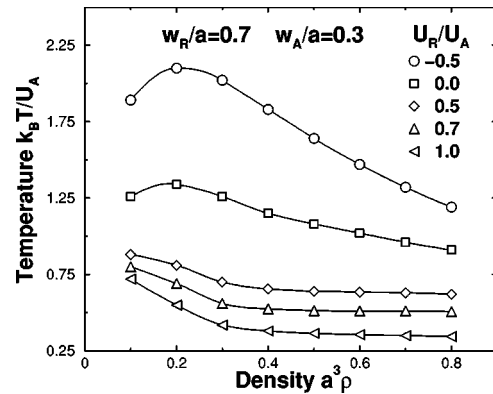


FIG. 3. Instability lines, as in Fig. 2, for the pair potentials with parameters $w_R/a=0.7$, $w_A/a=0.3$, and (from top to bottom) $U_R/U_A=-0.5, 0.0, 0.5, 0.7, 1.0$.

of the spinodal line corresponding to the liquid-gas critical point. Upon increasing U_R/U_A to 0.5 (Fig. 2), the only evident change of the instability line is a shift toward a lower T as a result of the overall decrease of the interparticle attraction, with no hints of a second critical point. A small shift to lower ρ is also seen. This behavior is more evident for larger w_R .

Next, we consider a potential with a larger w_R ($w_R/a=0.7$, $w_A/a=0.3$). The instability line is calculated for several values of U_R/U_A (Fig. 3). Upon increasing U_R/U_A , we now find not only the shift to a lower T , but also an evident shift of the maximum of the line (i.e., the critical point, assuming that the instability line represents the behavior of the spinodal line) to a lower ρ . This result can be rationalized by observing that, passing from $U_R < 0$ to $U_R > 0$, the soft core becomes more and more difficult to penetrate and the system passes from a potential with a hard core a and an effective attractive range $w_A + w_R$ to a potential with an effective hard core b , for U_R/U_A large enough, and an attractive range w_A . As a consequence of the increase of the effective hard core, the critical density decreases and, as a consequence of the decrease of the effective overall attraction, the critical temperature decreases.

Comparing Figs. 2 and 3, we notice an important difference. In the case of larger w_R (Fig. 3), as U_R/U_A increases, the temperature of the instability line does not decrease with increasing ρ , but becomes rather flat. This result suggests that the instability line might develop a second maximum at larger values of ρ for even larger w_R .

We thus consider a potential with $w_R/a=1.0$ and $w_A/a=0.2$. The results (Fig. 4) show that for $0.4 \leq U_R/U_A \leq 0.6$, the instability line has two well-distinct local maxima, suggesting the possibility of two critical points in the phase diagram for the fluid phases [38]. For $U_R/U_A \leq 0.3$ or $U_R/U_A \geq 0.7$, the instability line shows just one maximum, similar to the typical spinodal line of a fluid of hard spheres with diameter a or b , respectively, attracting via a square well of width w_A . As a consequence of this analysis, we choose $w_R/a=1$, $w_A/a=0.2$, and $U_R/U_A=0.5$ as the set of parameters for the potential used in the MD calculations in 3D [11].

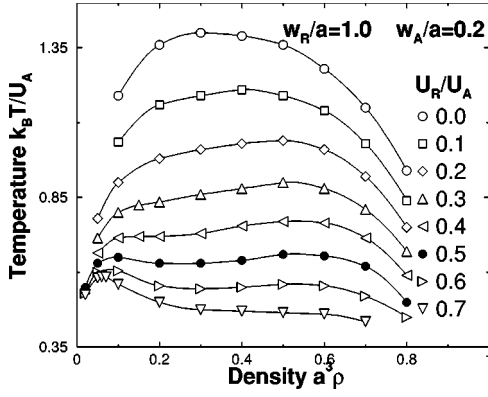


FIG. 4. Instability lines, as in Fig. 2, for the pair potentials with parameters $w_R/a=1.0$, $w_A/a=0.2$, and (from top to bottom) $U_R/U_A=0.0, 0.1, 0.2, 0.3, 0.4, 0.5, 0.6, 0.7$. The full symbols correspond to the set of parameters selected for the MD calculations.

IV. THE MOLECULAR DYNAMICS APPROACH

In this section we give extensive details on the MD method and extend the analysis performed in Ref. [11], including calculations for the crystal phase, the crystal nucleation process, and the metastable phases. We perform MD simulations at a constant number of particles N of unit mass m , at constant volume V , with periodic boundary conditions, and at a constant average temperature T . We present the results for $N=490, 720$ and $N=1728$. The average temperature is set by coupling the system to a thermal bath at the assigned T , with a thermal exchange coefficient per particle between the system and the bath equal to $k=0.015 (U_A/m)^{1/2} k_B/a$. We use a standard collision event list algorithm [39] to evolve the system and a modified Berendsen method to achieve the desired T [40].

The pressure is calculated by using the virial expression for a step potential [17],

$$P = \frac{m}{3V} \left\langle \sum_i^N v_i^2 + \frac{1}{\Delta t} \sum_{i,j}' \Delta \vec{v}_i \cdot (\vec{r}_i - \vec{r}_j) \right\rangle, \quad (11)$$

with $\sum_{i,j}'$ being the sum over the particle pairs (i,j) undergoing a collision in the time interval $\Delta t \equiv (10^5 m a^2 / U_A)^{1/2}$, hereafter used as unit of time, and with $\Delta \vec{v}_i \equiv \vec{v}_i' - \vec{v}_i$, where \vec{v}_i and \vec{v}_i' are the velocities of the particle i at position \vec{r}_i before and after the collision with particle j at position \vec{r}_j .

A. The crystal

First, to locate the equilibrium crystal line, we simulate a crystal seed surrounded by the gas. We prepare a crystal seed by cooling at $T=0.45 U_A/k_B$ a gas configuration with density $\rho=0.018/a^3$.

The crystal (Fig. 5) is the effect of the competition between the hard-core repulsion at distance $r=a$ and the attraction at distance $r=b$. The resulting structure is reminiscent of the close packing of hard spheres with diameter a or b , but the competition gives rise to new symmetries (Fig. 5). The minimum in the interparticle interaction potential at $b \leq r < c$ would induce a face-centered-cubic crystal with lat-

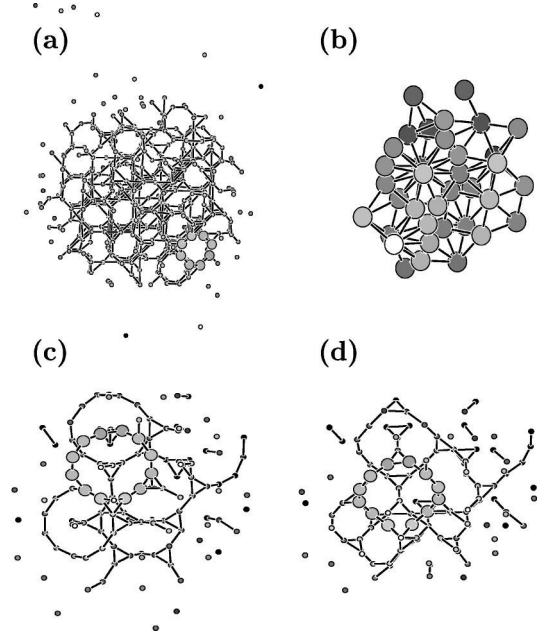


FIG. 5. The MD configuration equilibrated at $k_B T / U_A = 0.45$ and $a^3 \rho = 0.018$. Darker particles are farther away from the observation point. (a) The crystal, with defects, surrounded by the gas. Bonds connect particles at distance $1 \leq r/a \leq 1.2$. The radius of the particles is *not* in scale with the distances. A typical ring of eight particles (octagon) is plotted with a larger radius. (b) A section of the crystal. Bonds connect particles at distance $2 \leq r/a \leq 2.2$. The radius of the particles is in scale with the distances. Note, in the upper part of the panel, a ring of 12 NN particles (dodecagon), connected by bonds to two central particles. (c) The same 12 particles of the section in (b) are plotted with a larger radius with respect to the other particles. Bonds are like in panel (a). (d) A rotation of 40° around a central horizontal axis of the section in (c) reveals the eightfold symmetry observed in (a).

tice space ranging from b to c and a characteristic sixfold symmetry on one projection plane with seven particles to form a triangular lattice. However, due to the soft core, the system can allocate particles at the hard-core distance $a=b/2$. This induces a 12-fold symmetry, placing an average number of 12, almost on-plane, nearest neighbor (NN) particles at a distance $1 \leq r/a \leq 1.2$ from each other to form a dodecagon around two particles. These two NN particles are next nearest neighbors to the dodecagon, at a distance $2 \leq r/a \leq 2.2$, and are placed on a line almost perpendicular to the plane individuated by the dodecagon [Fig. 5(b)]. This structure is distorted in such a way to form nonclosed chains of NN particles that wrap along another axis to give rise to an eightfold symmetry [Fig. 5(c,d)].

By analyzing the crystal structure obtained from the MD simulations, we conclude that the position of the particles in the crystal can be described by $\vec{r} = i \cdot \vec{a} + j \cdot \vec{b} + k \cdot \vec{c} + \vec{r}_m$, where \vec{r}_m , for $m=1, \dots, 10$, are the coordinates, with respect to the center of the cell, of the ten particles forming a crystal cell, \vec{a} , \vec{b} , and \vec{c} are the lattice vectors describing the position of the center of the cell, and i, j , and k are integers such that $i+j+k$ is even. We estimate the lattice vectors

TABLE I. The coordinates of the lattice vectors as obtained after an equilibration time $10^2\Delta t$ at $T=0.03U_A/k_B$ of the artificial crystal (Fig. 6) proposed to describe the crystal structure found in the MD simulations (Fig. 5). The errors on the parameters are on the last decimal digit and decrease as the square root of the time of averaging.

	x	y	z
\vec{a}/a	1.95	0.00	0.11
\vec{b}/a	0.00	3.41	0.00
\vec{c}/a	0.00	0.00	1.94

(Table I) and the coordinates of the particles forming the cell (Table II) after an equilibration time $10^2\Delta t$ at $T=0.03U_A/k_B$ for an artificial crystal placed in vacuum (Fig. 6). The resulting density of the crystal is $a^3\rho\approx 0.39$.

Surface effects could be responsible for the tilt that can be seen in Fig. 6(d). In a system with $N=720$, this tilt disappears when the sample is equilibrated at higher T (Fig. 7).

We compare the $g(r)$ (Fig. 8) of the MD crystal in Fig. 5 and of the artificial crystal in Fig. 6, both equilibrated at $T=0.48U_A/k_B$. Both functions show peaks located at the same distances, with two large peaks at $r/a=1$ and $r/a=2$, consistent with the presence of the two characteristic distances a and b in the potential. The comparison confirms that the proposed crystal is a good representation of the crystal structure generated by the MD simulation. The slightly different intensities of the peaks of the $g(r)$ of the two systems are probably due to the defects of the MD crystal.

The validity of the artificial crystal as a good description of the real crystal structure is confirmed also by the evolution of the potential energy per particle (inset in Fig. 8) when

TABLE II. The coordinates $\vec{r}_m=(x_m, y_m, z_m)$ for $m=1, \dots, 10$ of the ten particles forming a crystal cell, with respect to the center of the cell, as obtained after an equilibration time $10^2\Delta t$ at $T=0.03U_A/k_B$ of the artificial crystal (Fig. 6). The characteristic distances, with an error on the last decimal digit, are $l_1/a=0.53$, $l_2/a=0.59$, $l_3/a=0.07$, $l_4/a=1.43$, $l_5/a=0.05$, $l_6/a=0.03$, $l_7/a=1.40$, $l_8/a=0.52$. The errors decrease as the square root of the time of averaging. For each particle m of the cell, we denote with n_m^{sc} the number of particles in the crystal at a distance $r\leq b$ (in the soft core) and with n_m^{aw} the number of particles at a distance $b<r\leq c$ (in the attractive well).

m	x_m	y_m	z_m	n_m^{sc}	n_m^{aw}
1	l_1	l_2	l_3	6	15
2	$-l_1$	l_2	$-l_3$	6	15
3	$-l_1$	$-l_2$	$-l_3$	6	15
4	l_1	$-l_2$	l_3	6	15
5	$-l_4$	0	$-l_5$	3	24
6	l_4	0	l_5	3	24
7	$-l_6$	$-l_7$	$-l_8$	4	21
8	l_6	$-l_7$	l_8	4	21
9	$-l_6$	l_7	$-l_8$	4	21
10	l_6	l_7	l_8	4	21

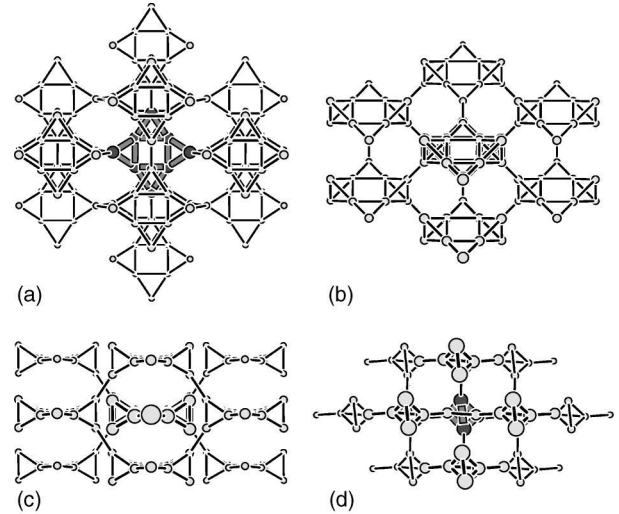


FIG. 6. The artificial crystal configuration equilibrated for a time $10^2\Delta t$ with a MD simulation at $T=0.03U_A/k_B$. Bonds connect particles at distance $r/a\leq 1.2$. The radius of the particles is *not* in scale with the distances. Greater particles are closer to the observation point. The configuration contains 15 cells. The central cell is emphasized by darker bonds. (a) Each cell has four particles at the corners of a rectangle (\vec{r}_m with $m=1, \dots, 4$ in Table II), whose long sides form two triangles, with two particles on the same plane (\vec{r}_m with $m=5, 6$ in Table II), and the short sides form two tetrahedra, each with two more particles (\vec{r}_m with $m=7, \dots, 10$ in Table II). (b) The crystal configuration rotated by $\pi/4$ around a central horizontal axis shows the eightfold symmetry seen in Figs. 5(a) and 5(d). (c) A further rotation of $\pi/4$ around the same axis shows the dodecagons seen in Figs. 5(b) and 5(c). (d) A rotation of $\pi/2$ around a central vertical axis shows again the octagons seen in Figs. 5(a) and 5(d).

the MD crystal and the artificial crystal are heated, from the configuration equilibrated at $T=0.48U_A/k_B$ to $T=0.60U_A/k_B$. Both samples equilibrate to the same energy. The starting potential energy is, as expected, in both cases greater than the ground state energy $U_0/N=$

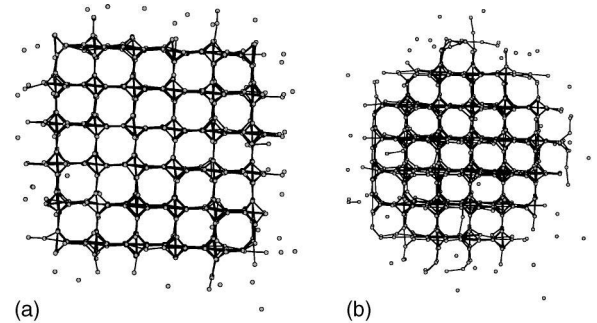


FIG. 7. The artificial crystal configuration for $N=720$ particles equilibrated with a MD simulation at $T=0.10U_A/k_B$ (a) and at $T=0.52U_A/k_B$ (b). Bonds connect particles at distance $r/a\leq 1.2$. The radius of the particles is *not* in scale with the distances. The crystal seeds are in equilibrium with the gas phase and show many defects. The tilt present at the lower T in (a) disappears at the higher T in (b).

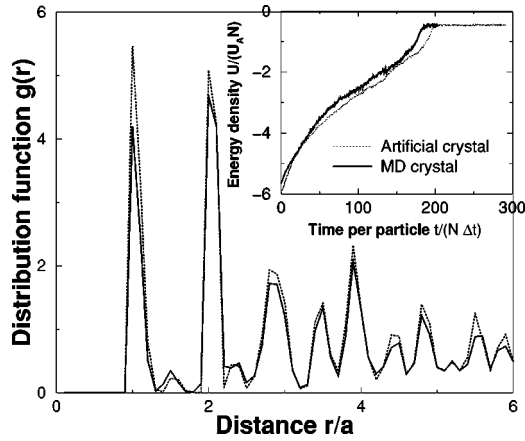


FIG. 8. The radial distribution functions $g(r)$ for the MD crystal (solid line) and the artificial crystal (dotted line), both equilibrated at $T=0.48U_A/k_B$, are very close to each other. Inset: the potential energy density U/N for the MD crystal (solid line) with $N=490$ and the artificial crystal (dotted line) with $N=720$, both equilibrated at $T=0.60U_A/k_B$, starting from a configuration equilibrated at $T=0.48U_A/k_B$, as a function of the time divided by the number of particles N .

$-8.45U_A$, calculated from the number of particles at distance $a \leq r < b$ and at distance $b \leq r < c$ (Table II), due to surface effects. We find analogous results for the evolution of the kinetic energy.

To test if the system has more than one crystal structure as a function of the density, we cool at $T=0.6U_A/k_B$ a fluid configuration equilibrated at $T=0.8U_A/k_B$ and $\rho = 0.267/a^3$, and compare the resulting $g(r)$ with the case of the crystal seeds at $T=0.45U_A/k_B$ and $\rho = 0.018/a^3$, finding no relevant differences (Fig. 9). At the same time, the attempt of finding alternative artificial crystal structures has

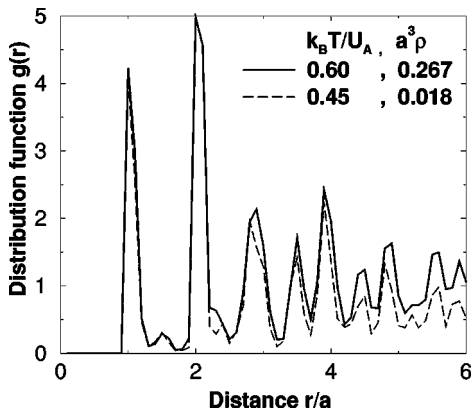


FIG. 9. Comparison of the radial distribution function $g(r)$ calculated for two MD configurations obtained by cooling the system at different densities: the solid line is for the configuration at $k_B T/U_A=0.60$ and $a^3 \rho=0.267$, the dashed line for the configuration at $k_B T/U_A=0.45$ and $a^3 \rho=0.018$. The two functions are very close to each other for distances $r/a \leq 4$, showing that the crystal structure is the same at both densities. The difference between the two functions is consistent with the presence of defects and of the surrounding gas.

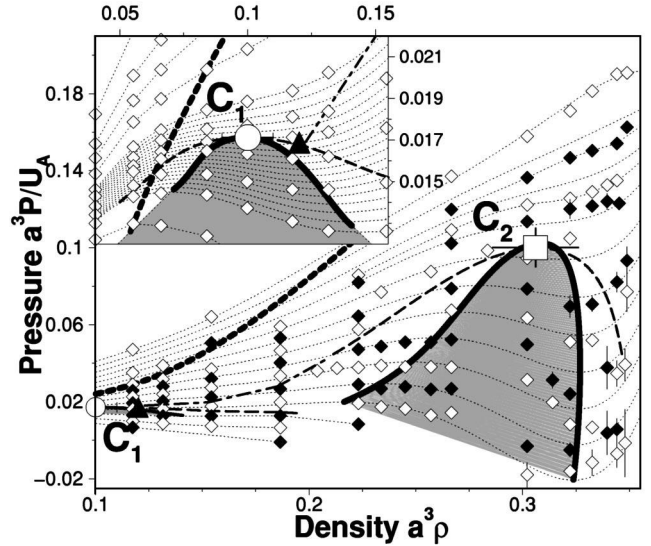


FIG. 10. The MD P - ρ phase diagram. The thick dashed line is the gas-crystal first-order transition line at the equilibrium. The calculations in the region below this line are for the metastable fluid states. Main panel: the diamonds (full and open) are the MD calculations for (bottom to top) $k_B T/U_A=0.570, 0.580, 0.590, 0.600, 0.610, 0.620, 0.630, 0.640, 0.650, 0.660, 0.670, 0.675, 0.685, 0.700$. The dotted lines are the isotherms calculated by polynomial interpolations of the points at constant T and, at the same time, of the points at constant ρ . The circle at $\rho=0.1/a^3$ is the gas-LDL critical point C_1 . The square at $\rho=0.306/a^3$ is the gas-HDL critical point C_2 . The solid thick lines connecting the local minima and maxima along the isotherms are the spinodal lines associated with each critical point and the shaded regions are the associated mechanically unstable regions. The dashed lines, passing through the critical points, are the coexistence regions associated with each critical point. The meeting point of the gas-HDL coexistence line with the gas-LDL coexistence line gives the possible triple point (full triangle at $\rho \approx 0.12/a^3$). Where not shown, the errors are smaller than the symbols. Inset: enlarged view around C_1 . Symbols are as in the main panel. The diamonds are the MD calculations for (bottom to top) $k_B T/U_A=0.580, 0.590, 0.595, 0.600, 0.603, 0.606, 0.609, 0.620, 0.630, 0.640, 0.660$.

revealed, after an appropriate equilibration, that the only stable structure is that presented in Fig. 6. We therefore assume that the system, at least for this choice of the potential's parameters, has one single-crystal structure independent of ρ , within the considered range of densities.

Starting from a configuration with the crystal seed described above, we equilibrate the system at different densities and temperatures. We define the system to be in the solid phase if, after a time $10^6(ma^2/U_A)^{1/2} \approx 3 \times 10^3 \Delta t$, the crystal seed is growing, or we consider it in a fluid phase if the seed is melting. The cases in which the trend is not clear within the simulation time are considered as belonging to the first-order transition region [41]. The crystallization pressure rapidly increases with ρ and T , giving a first-order transition line (in the thermodynamic limit) that separates the equilibrium P - ρ phase diagram in a high- T fluid and a low- T crystal (Fig. 10) [11].

B. The supercooled liquids

At equilibrium, there is no (stable) liquid phase. A phase diagram without an equilibrium liquid phase is expected [42,43] for systems with an interparticles potential with a narrow attractive part, such as the one we are considering here. However, the liquid is present as a metastable (supercooled) phase with respect to the crystal phase [11]. To study the metastable phase diagram, we equilibrate the system for each ρ from a gas configuration at $T=0.70U_A/k_B$ and then rapidly cool it to the desired $T\geq 0.57U_A/k_B$, calculating P , $g(r)$, and the total potential energy $U\equiv\sum_{i<j}^N U(|r_i-r_j|)$.

We find that the supercooled fluid phase has a lifetime longer than $3\times 10^3\Delta t$ (the standard length of our simulations) for $\rho\leq 0.20/a^3$ at $T\approx 0.57U_A/k_B$, for $\rho\leq 0.27/a^3$ at $T\approx 0.65U_A/k_B$, and for $\rho\leq 0.34/a^3$ at $T\approx 0.70U_A/k_B$. The system is equilibrated in the fluid phase for $t\geq 20\Delta t$, after which we average P , $g(r)$, and U over the time. We calculate each state point by averaging the configurations for $3\times 10^2\Delta t\leq t\leq 3\times 10^3\Delta t$. We estimate the errors by dividing the configurations into 90 nonoverlapping intervals of $30\Delta t$, which we assume to be independent.

For larger ρ , the system spontaneously crystallizes (homogeneous nucleation process). Thus, we only average over configurations that occur before nucleation. To be certain that our estimates are carried out in the fluid phase, we study

$$S(\vec{q},t)\equiv\frac{1}{N}\left\langle\sum_{j,k}^N e^{i\vec{q}\cdot[\vec{r}_j(t)-\vec{r}_k(t)]}\right\rangle, \quad (12)$$

where $\vec{r}_j(t)$ is the position of particle j at time t and \vec{q} is the wave vector. At equilibrium, the average of $S(\vec{q},t)$, over the time and the wave vectors with the same module, is the structure factor $S(q)$, describing the spatial correlation in the system. Therefore, $S(\vec{q},t)$ describes the time evolution of the spatial correlation along the wave vector \vec{q} . In particular, for a crystal-like configuration, with a long-range order, there is at least one wave vector such that $S(\vec{q},t)\sim O(N)$, while for a fluidlike configuration, it is $S(\vec{q},t)\sim O(1)$ for all \vec{q} .

The time evolution of $S(\vec{q},t)$ for a typical simulation inside the nucleation region is presented in Fig. 11. To limit the computational effort, we consider 9×10^4 wave vectors with modulus $q\leq 100/a$, which is much larger than the wave vectors of the largest peak of the crystal structure factor, $q\approx 2\pi/(a/2)$, corresponding to the hard-core radius [Fig. 11(c)]. Three different regimes can be distinguished in the example in Fig. 11.

(i) A short-time regime A, in which $S(\vec{q},t)\sim O(1)$ for any q [$q=1/a$ and $q\approx 12/a\approx 4\pi/a$ are shown in Figs. 11(a,b)]. Averaged on this interval [curve A in Fig. 11(c)] the $S(q)$ is fluidlike.

(ii) An intermediate-time regime B, in which $S(\vec{q},t)$ for $q=1/a$ has an increase, but has no increase for $q\approx 4\pi/a$. Averaged on this interval [curve B in Fig. 11(c)] the $S(q)$ is fluidlike, but with an increase for $q\rightarrow 0$. This increase indicates an increase of K_T , according to the equation

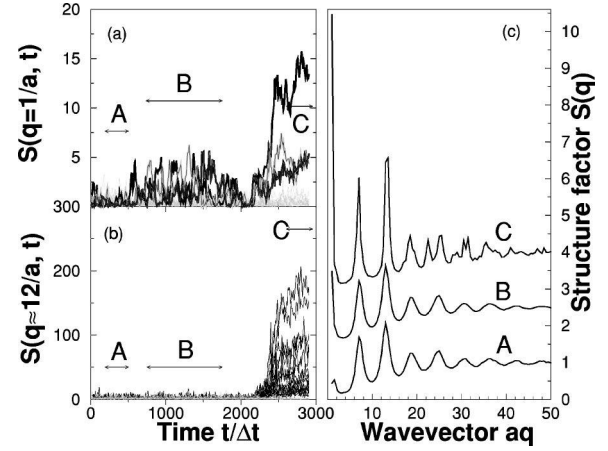


FIG. 11. MD calculations. (a) Time evolution of the structure factor $S(\vec{q},t)$ at $T=0.62U_A/k_B$ and $\rho=0.27/a^3$, for wave vectors with modulus $q=1/a$ and for a time $t/\Delta t=3000$; in the time interval A with $200\Delta t\leq t\leq 500\Delta t$, it is $S(\vec{q},t)\sim O(1)$ for any \vec{q} ; in the time interval B with $700\Delta t\leq t\leq 1800\Delta t$, for six wave vectors there is an increase in $S(q=1/a,t)$; in the interval C with $2100\Delta t\leq t\leq 3000\Delta t$, for the same six wave vectors there is a larger increase. (b) As in (a) but for $q\approx 12/a\approx 4\pi/a$; in this case there is a large increase in $S(q\approx 12/a,t)$, more than one order of magnitude, only in the time interval C for several wave vectors, revealing the formation of a crystal seed. (c) The structure factor $S(q)$, given by the average over the dimensionless wave vectors aq with the same modulus and the average over the time intervals A, B, and C of $S(\vec{q},t)$. The curves for B and C are offset by 1.5 and 3, respectively. All the curves go to 1 for large q . In the interval A, $S(q)$ is liquidlike. In the interval B, $S(q)$ is still liquidlike but with an increase for $q\rightarrow 0$, while in the interval C it is solidlike, with two large peaks at $q\approx 2\pi/(b/2)=2\pi/a$ and $q\approx 2\pi/(a/2)$, corresponding to the soft-core radius and the hard-core radius, respectively, and a large value for $q\rightarrow 0$.

$$k_B T \rho K_T = \lim_{q\rightarrow 0} S(q), \quad (13)$$

where we use Eq. (3) and the definition $S(\vec{q})\equiv 1+\rho\hat{h}(\vec{q})$. The increase of K_T is associated with the phase separation into two fluids with different densities. To help visualize the phase separation, in Fig. 12 we show the three planar projections of the three dimensional configuration corresponding to the largest peak in the time interval B for $q=1/a$ [Fig. 11(a)]. By dividing the box into two equal parts, the histograms of the number of particles in each part (Fig. 12) show a separation in density approximately at half the box length, corresponding to $q=4\pi(\rho/N)^{1/3}\approx 1/a$ for $\rho=0.27/a^3$ and $N=490$, in agreement with the peak at $q=1/a$ for curve B in Fig. 11(c). In each projection, it is possible to see regions of high density and low density (Fig. 12). To better quantify the phase separation occurring in the configuration in Fig. 12, we present (main panel in Fig. 12) the histogram of the number of pairs of particles at a relative distance $r_i<r\leq r_{i+1}$, where $r_{i+1}-r_i=a/10$. The histogram has a broad maximum around the distance $r/a=1.2$ in the soft-core range, showing that there exists a subset of the pairs of particles that are at a preferred distance $1.1<r/a\leq 1.2$. This subset is the HDL

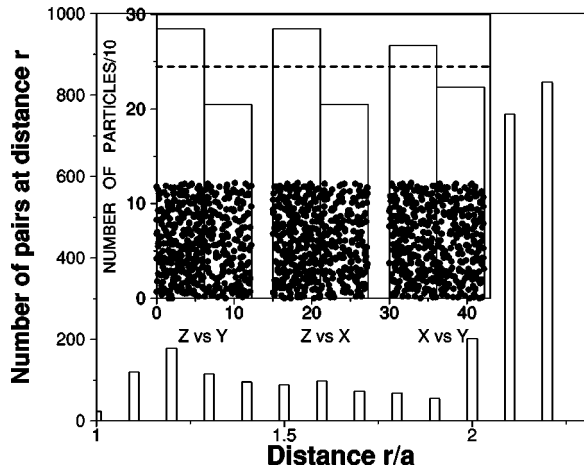


FIG. 12. Inset: projections of the three-dimensional configuration of $N=490$ particles in a system of size $V^{1/3}=12.25a$ and corresponding to the largest peak in the time interval B in Fig. 11(a). The projections are (from left to right) Z vs Y , Z vs X , and X vs Y . The histograms of a number of particles as functions of the abscissa are superimposed on each projection. Projections and histograms are shifted for clarity. Each histogram bin corresponds to half of the box size. The dashed line shows the average number of particles in each bin for a uniform configuration ($N/2=245$). The largest deviation from the average is $40 > \sqrt{N} \approx 22$, i.e., twice the statistic fluctuation for a random distribution of particles. Main panel: the number of pairs of particles at a relative distance $r_i < r \leq r_{i+1}$ for the MD configuration in the inset, with $r_0=0$, $r_1/a=1$, and $r_{i+1}-r_i=a/10$ for $i > 1$. The histogram shows a large maximum corresponding to the attractive range $2 \leq r/a < 2.2$, a broad maximum around $r/a=1.2$, and a small number of pairs at the hard-core distance $r=a$. Therefore, the preferred relative distance for pairs of particles within the soft-core range $1 \leq r/a < 2$ is, for this configuration, $r/a \approx 1.2$.

that has a nonuniform distribution over space [Fig. 13(b)], consistent with the phase separation.

(iii) A long-time regime C , in which is $S(\vec{q}, t) \sim O(N)$ for $q \approx 4\pi/a$, revealing the crystal nucleation process. The $S(q)$ averaged over this time interval [curve C in Fig. 11(c)] is solidlike. In the same interval, $S(\vec{q}, t)$ for $q=1/a$ has a large increase, corresponding to the increase of $K_T[S(q)]$ increases for $q \rightarrow 0$, which is consistent with the phase separation between the fluid and the crystal. As an example, in Fig. 14 we show the last configuration of the time series in Fig. 11, where the crystal structure, already observed in Fig. 5, is clearly seen.

The example in Fig. 11(b) shows the formation of a high-density fluid phase within the time interval B , followed by the nucleation of the crystal phase. The onset of the nucleation is marked by a large increase of $S(\vec{q}, t)$ for all the wave vectors corresponding to the peaks in the crystal $S(q)$ and by a large steplike decrease of energy.

C. The phase diagram and the finite size effect

By repeating the analysis described above for all the simulations inside the region with nucleation—and discarding the data corresponding to the formation of the

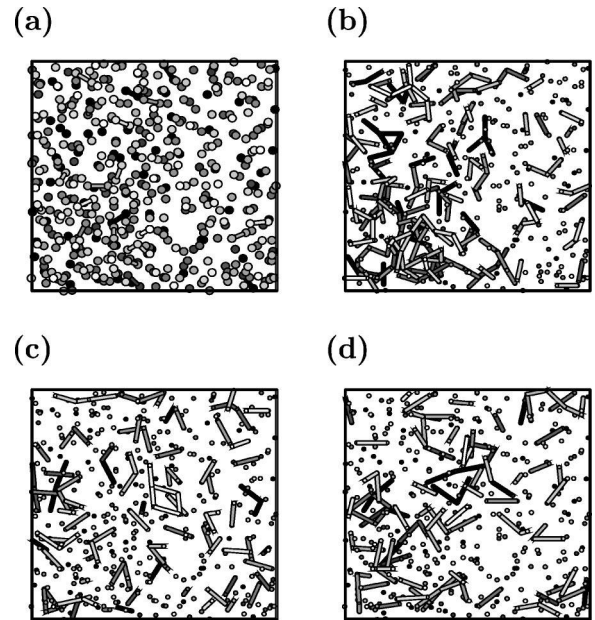


FIG. 13. Spatial distribution of pairs of particles at various distances for the MD configuration shown in Fig. 12. The radius of the particles is *not* in scale with the distances. In (a) the darker particles are farther away from the observation point. Bonds connect particles at the hard-core distance $1 \leq r/a < 1.1$ in panel (a), at distance $1.1 < r/a \leq 1.2$ in panel (b), at distance $1.3 < r/a \leq 1.4$ in panel (c), at distance $1.5 < r/a \leq 1.6$ in panel (d). The nonuniform distribution of bonds is clearly seen in panel (b).

nucleus—it is possible to calculate the state points corresponding to the metastable fluid phase. The phase diagram in Fig. 10 is based on averages over a total of 10^5-10^6 configurations in the fluid phase, accumulated in independent runs.

For completeness we recall here the main features of the phase diagram in Fig. 10 and presented in Ref. [11]. The (mechanically unstable) region at high ρ for $T \lesssim 0.67U_A/k_B$, where P decreases for increasing ρ , denotes the coexistence of the gas and HDL. The unstable region at

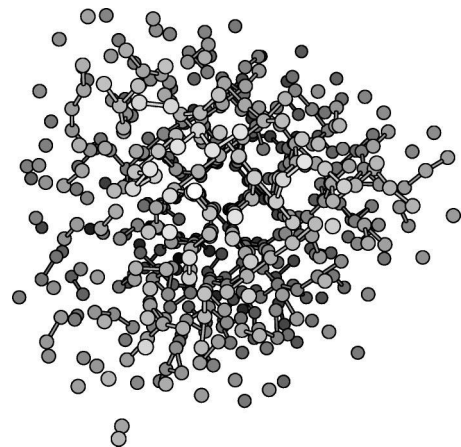


FIG. 14. The last MD configuration in the time series in Fig. 11. A crystal nucleus surrounded by gas is clearly seen. Bonds connect particles at distance $r/a \leq 1.1$. The 3D perspective is given as in Fig. 5. The radius of particles is *not* in scale with the distances.

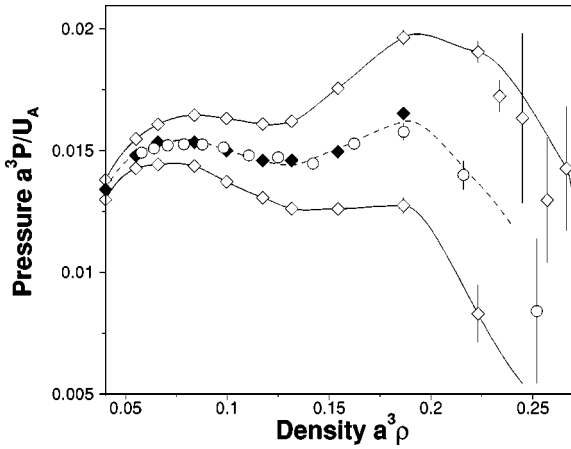


FIG. 15. Comparison between MD simulations for $N=490$ (full diamonds) and $N=1728$ (circles) at $k_B T/U_A=0.595$. The results for the two sizes are very close. For comparison, we include also the calculations for $N=490$ at $k_B T/U_A=0.60$ and 0.59 (upper open diamonds and lower open diamonds, respectively) and the interpolation at $k_B T/U_A=0.595$ (dashed line) between these two isotherms, showing the presence of two regions with negatively sloped isotherms. The points calculated for $N=1728$ are also consistent with this interpolation, suggesting that the finite size effect between $N=490$ and $N=1728$ is small. Errors, where not shown, are smaller than the symbols.

low ρ for $T \leq 0.603 U_A/k_B$ (inset in Fig. 10) denotes the coexistence of the gas and LDL. The coexistence lines are obtained by using the Maxwell construction of the equal areas [1], suggesting the presence of a gas-LDL-HDL triple point.

By definition, the spinodal lines (limit of stability of each phase with respect to the coexisting phase) meet the coexistence lines at a critical point. Therefore, by interpolation we estimate the gas-LDL critical point C_1 at $k_B T_1/U_A=0.603 \pm 0.003$, $a^3 \rho_1=0.10 \pm 0.01$, $a^3 P_1/U_A=0.0171 \pm 0.0005$, and the gas-HDL critical point C_2 at $k_B T_2/U_A=0.665 \pm 0.005$, $a^3 \rho_2=0.306 \pm 0.020$, $a^3 P_2/U_A=0.10 \pm 0.01$. These values are consistent with the linear interpolations of the MD isotherms (Fig. 10).

The phase diagram resulting from the MD calculations is, as expected, in agreement with the time-dependent analysis of the structure factor presented above. For example, the case presented in Fig. 11 corresponds to a state point inside the gas-HDL coexistence region at a density higher than the crystal nucleation density for $T=0.62 U_A/k_B$. The nucleation of the (metastable) HDL phase is thus followed by the crystal nucleation.

To estimate the finite size effect in our calculations, we compare the results for $N=490$ and $N=1728$ for an isotherm below both critical points (Fig. 15). The calculations do not show any relevant finite size effect, suggesting that the MD results for $N=490$ are reliable.

V. THE RADIAL DISTRIBUTION FUNCTION ANALYSIS

The interpretation of the HNC instability line is qualitatively consistent with the MD spinodal line for the corresponding set of the potential's parameters. The projection of the MD spinodal line in the T - ρ plane (not shown) has the

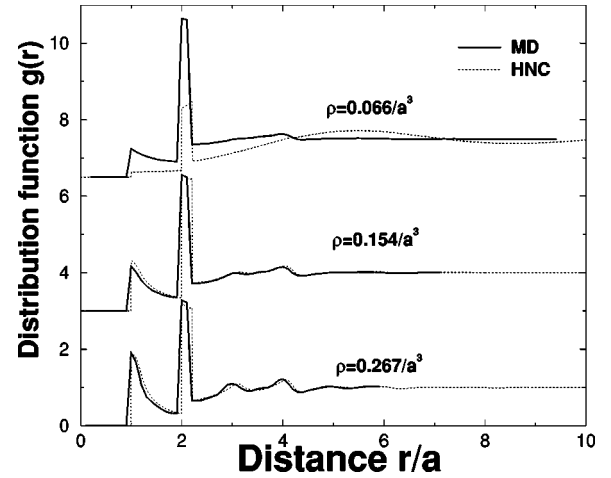


FIG. 16. Comparison between the $g(r)$ calculated in the HNC approximation (dotted line) and by MD simulations (solid line). As an example, we present the calculations at $T=0.64 U_A/k_B$ for densities (from top to bottom) $a^3 \rho=0.066$, 0.154 , 0.267 . For clarity a constant value is added to the first two curves (6.5 and 3, respectively). The two independent calculations are very close at intermediate densities. At large r all the curves go to 1.

same characteristics as the HNC instability line, with two local maxima and one local minimum. In both approaches, the high- ρ local maximum occurs at a temperature higher than the temperature of the low- ρ maximum and the presence of a triple point is suggested by the presence of the local minimum.

The quantitative HNC predictions for the locations of the two critical points are, as expected, only partially consistent with the MD results. It is remarkable that the HNC estimates of the density of the low- ρ local maximum ($\rho \approx 1/a^3$) and the temperature of the high- ρ local maximum ($T \approx 0.65 U_A/k_B$) of the instability line are close to the corresponding MD results for C_1 and C_2 , respectively.

An estimate of the agreement between the two methods can be evaluated by comparing the calculations for $g(r)$ within the two approaches (Fig. 16). In contrast with what could be suggested by the nature of the HNC approximation—i.e., the underestimate of the indirect correlation—the agreement is better at intermediate ρ than at low ρ (Fig. 16). In particular, at low ρ the HNC approximation underestimates the probability of a particle penetrating the soft core or entering the attractive well. At higher ρ , instead, the estimates of the $g(r)$ within the two approaches are almost indistinguishable.

The $g(r)$ of the low- ρ fluid is characterized by a large peak at $r=b$ corresponding to the shortest attractive distance. As a consequence of the increase of the density, the peak at the hard-core distance $r=a$ increases while the peak at $r=b$ decreases, and additional peaks at $r/a=3,4,\dots$ appear. In Fig. 17 we present the calculation of $g(r)$ for the gas phase, the gas-HDL coexisting region, and the HDL phase. In particular, by combining the radial distribution functions evaluated in each pure phase, we can estimate the composition of the mixed phase. For example, at $T=0.64 U_A/k_B$ the radial distribution function calculated at $\rho_0=0.302/a^3$ is

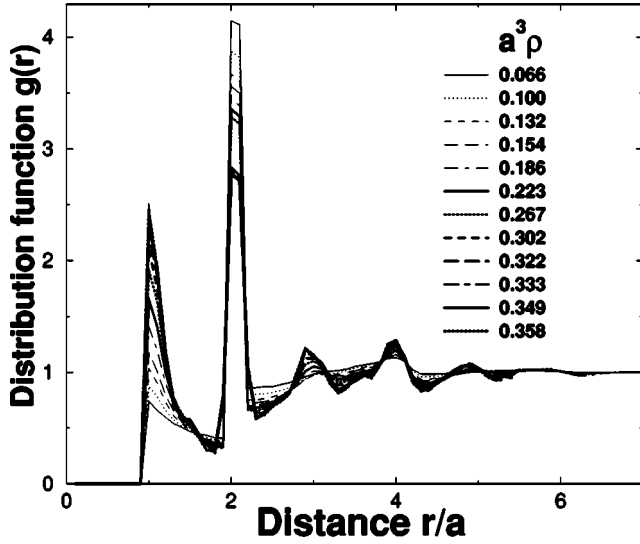


FIG. 17. The radial distribution function $g(r)$ calculated from the MD results at $T=0.64U_A/k_B$ for densities $a^3\rho=0.066, 0.100, 0.132, 0.154, 0.186, 0.223, 0.267, 0.302, 0.322, 0.333, 0.349, 0.358$. With increasing ρ , the peak at $r=a$ increases and the peak at $r=b$ decreases, while more peaks appear at larger r .

$g_0(r) \approx X_1 g_1(r) + X_2 g_2(r)$, where $g_1(r)$ and $g_2(r)$ are the radial distribution functions at the same T and at $\rho_1 = 0.223/a^3$ and $\rho_2 = 0.349/a^3$, respectively, with $X_1 = 0.3$ and $X_2 = 0.7$ (Fig. 18), revealing that the system is composed approximately by 30% gas and 70% HDL.

From Eq. (2), by using the $g(r)$ calculated from the MD simulations, we evaluate the average number of particles $N(r) = \int dN(r)$ within a sphere of radius r (Fig. 19). This analysis reveals that the number of particles ΔN within the repulsive range and within the attractive range increases linearly with ρ (inset of Fig. 19), and that the increase is faster

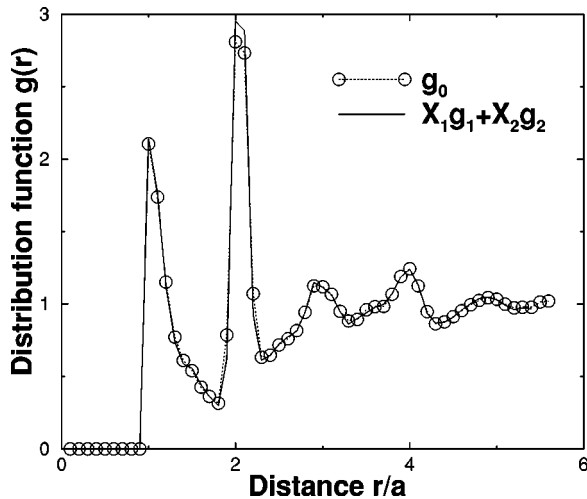


FIG. 18. The radial distribution function calculated from the MD simulations at $T=0.64U_A/k_B$ and $\rho=0.302/a^3$ (open circles) is compared with the composition $X_1 g_1(r) + X_2 g_2(r)$ (solid line), where $g_1(r)$ is the radial distribution function for the pure gas phase (at $\rho=0.223/a^3$) and $g_2(r)$ is for the pure HDL phase (at $\rho=0.349/a^3$) at the same T , with $X_1 = 0.3$ and $X_2 = 0.7$.

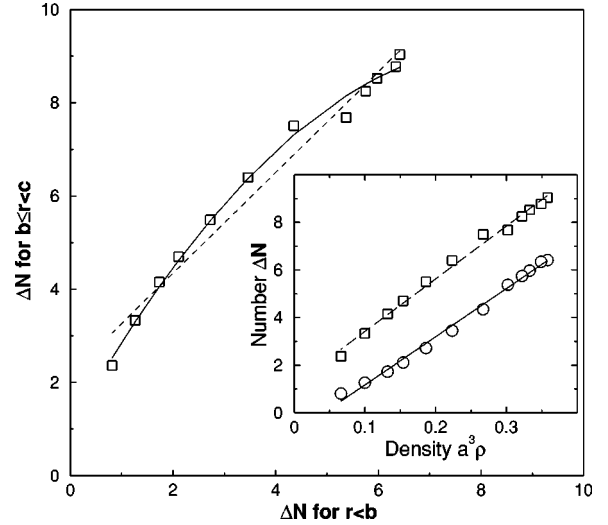


FIG. 19. Inset: the MD results at $T=0.64U_A/k_B$ for the cumulative number of particles ΔN within the repulsive range $r < b$ (circles) and within the attractive range $b \leq r < c$ (squares), increasing linearly with ρ in this range of densities; the linear fit of the data gives a slope 20.2 ± 0.5 for the solid line and a slope 22.1 ± 0.6 for the dashed line. Main panel: the data in the inset plotted one versus the other to show that within the mechanically unstable region ($\rho > 0.267/a^3$), ΔN increases approximately in the same way with ρ both within the attractive and within the repulsive range (the dashed line is a linear fit of all the data with slope 1.08 ± 0.06) and increases faster within the attractive range at lower densities (the solid line is a quadratic fit).

within the attractive range (Fig. 19) for the densities we studied. In particular, the number of particles within the attractive range $b \leq r < c$ increases from 2.5 to $9 \ll \sum_{m=1}^{10} n_m^{aw}/10 = 19.2$ estimated for the artificial crystal (Table II).

VI. ABSENCE OF A DENSITY ANOMALY

In Ref. [11] it has been noted that the possibility of a second fluid-fluid critical point is not necessarily restricted to systems with a density anomaly, at least from a theoretical point of view. Here we present the explicit thermodynamic calculations for this result.

The defining relation for the density anomaly is given by

$$\left. \frac{\partial V}{\partial T} \right|_P < 0 \quad (14)$$

or

$$\left. \frac{\partial S}{\partial V} \right|_T \left. \frac{\partial V}{\partial P} \right|_T > 0 \quad (15)$$

for the Maxwell relation

$$\left. \frac{\partial V}{\partial T} \right|_P = - \left. \frac{\partial S}{\partial P} \right|_T, \quad (16)$$

where S is the entropy. Since

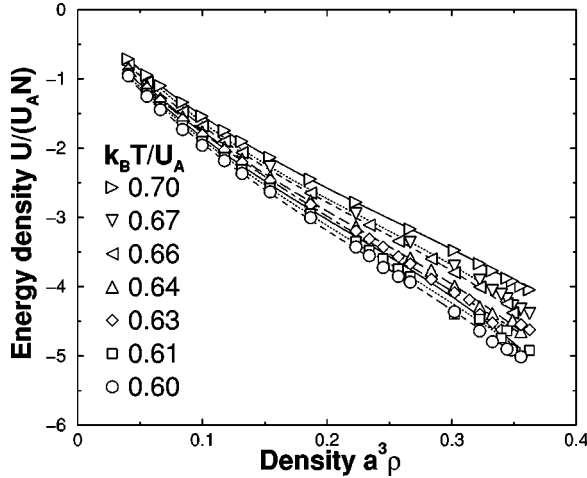


FIG. 20. The potential energy density U/N , calculated by MD simulations, as a function of the density ρ for temperatures (bottom to top) $k_B T/U_A = 0.60, 0.61, 0.63, 0.64, 0.66, 0.67, 0.70$. The symbols represent the MD calculations, with errors smaller than the symbol's size. The lines represent the cubic fit of the calculations with the parameters in Table III.

$$\left. \frac{\partial V}{\partial P} \right|_T < 0 \quad (17)$$

holds for a mechanically stable phase, Eq. (15) can be rewritten as

$$\left. \frac{\partial S}{\partial V} \right|_T < 0. \quad (18)$$

From the differential expression of the thermodynamic potential at constant T , we know that

$$TdS = dE + PdV, \quad (19)$$

where $E \equiv U + K$ is the total energy, with U and K being the total potential and kinetic energy, respectively. Therefore, it is

$$\left. \frac{\partial S}{\partial V} \right|_T = \frac{1}{T} \left. \frac{\partial U}{\partial V} \right|_T + \frac{P(V, T)}{T} \quad (20)$$

at constant T and we can rewrite the density anomaly condition in Eq. (18) as

$$\left. \frac{\partial U}{\partial V} \right|_T + P(V, T) < 0 \quad (21)$$

at constant T .

To calculate the left-hand side of Eq. (21), we need to evaluate $(\partial U/\partial V)_T$. In Fig. 20, we show our MD calculation for $U(\rho)$ at constant T . All the MD points can be fitted with a third-degree polynomial in ρ . The fitting parameters are given in Table III and are used to calculate the derivative $(\partial U/\partial V)_T$, shown in Fig. 21. Our calculations show a potential energy U increasing with V (inset of Fig. 21), with a

TABLE III. Parameters for the cubic fit $U/N = a_0 + a_1\rho + a_2\rho^2 + a_3\rho^3$ of the MD calculations for the potential energy density U/N in Fig. 20 for different temperatures. The errors on the fitting parameters are on the last decimal digit.

$k_B T/U_A$	a_0	a_1	a_2	a_3
0.60	-0.2309	-20.46	39.64	-56.90
0.61	-0.2228	-19.74	36.52	-51.11
0.63	-0.1279	-21.38	49.64	-76.71
0.64	-0.1098	-20.24	44.19	-65.17
0.66	-0.0458	-20.48	48.08	-70.72
0.67	-0.0733	-21.50	52.43	-75.20
0.70	-0.0446	-18.18	37.39	-49.14

derivative always positive, thus wherever P is positive, the condition in Eq. (21) is not satisfied and there is no density anomaly.

In the region where $P < 0$ (at low T and small V), the derivative $(\partial U/\partial V)_T$ rapidly increases in such a way that Eq. (21) is never satisfied. Particularly, in the range of volumes considered, it is always $(\partial U/\partial V)_T - 0.025U_A/a^3 > 0$, where $P = -0.025U_A/a^3$ is the minimum pressure, reached for $T = 0.6U_A/k_B$ and $V/N = 3.31a^3$ (Fig. 10). These results suggest that the density anomaly is ruled out for this choice of parameters. At this stage it is not clear if it is ruled out for *any* choice of parameters for our potential in 3D (see Ref. [15]).

VII. SUMMARY AND CONCLUSIONS

We analyzed the phase diagram of a soft-core potential, similar to potentials used in systems such as protein solutions, colloids, melts, and in pure systems such as liquid

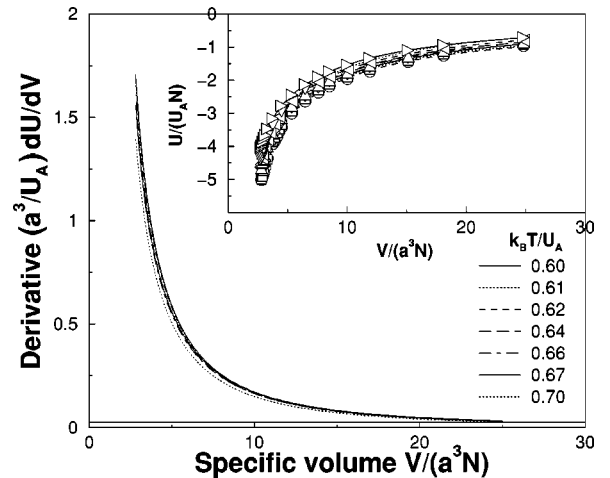


FIG. 21. The derivative $(\partial U/\partial V)_T$ calculated by using the cubic expression in Fig. 20, with the parameters in Table III, as a function of the specific volume V/N for temperatures (top to bottom) $k_B T/U_A = 0.60, 0.61, 0.63, 0.64, 0.66, 0.67, 0.70$. The derivative, in the considered range of V/N , is always larger than $0.025U_A/a^3$ (bottom horizontal line). Inset: the same MD results in Fig. 20 for U/N plotted as a function of V/N . The symbols are the same as in Fig. 20.

metals. We use two independent numerical methods, integral equations in the HNC approximation and MD simulations. The comparison of the HNC results with previously proposed soft core potentials suggests that the system has two fluid-fluid phase transitions for an appropriate choice of parameters—energy and width—of the repulsive soft core. We select a set of potential parameters with a narrow attractive well that gives a HNC instability line with two maxima and suggests the presence of two critical points.

The MD analysis shows, in agreement with the previous results for potentials with a short range attraction [42], a phase diagram with no stable liquid phase. We analyze the crystal structure, characterized by the competition between the attractive interaction at distance $r=b$ and the repulsive interaction at $r=a<b$. We show that the crystal, with eight-fold and 12-fold symmetries, is independent on the density, within the considered range of densities.

Hence, we study the metastable liquid phase at temperatures above and below the line of spontaneous crystal nucleation. We find two liquids in the supercooled phase, the LDL and the HDL, with two fluid-fluid transitions ending in two critical points, the gas-LDL critical point C_1 and the gas-HDL critical point C_2 , as already shown in Ref. [11]. Here we improve our estimate of the phase diagram and verify the absence of relevant finite size effects in the MD results.

We compare these results with the HNC calculations, con-

cluding that the HNC approximation underestimates the effect of the attractive interaction and overestimates the effect of the repulsive interaction at low ρ , and is in good agreement with the MD results at intermediate ρ .

Finally, by explicit calculation, we show that the condition for the density anomaly is never satisfied in the range of T and V considered here, as announced in Ref. [11]. Our results suggest that the density anomaly is always ruled out for this choice of potential parameters.

In conclusion, the results of this paper evoke an intriguing relation between the absence of the density anomaly and the presence of a single crystalline phase, with higher density than the liquid phases, in systems with two fluid-fluid phase transitions. This relation, which deserves greater investigation, is consistent with the fact that the substances with the density anomaly, and a hypothesized second liquid-liquid critical point, have more than one crystal structure, as in the case of water or carbon or silica.

ACKNOWLEDGMENTS

We wish to thank M. C. Barbosa, P. V. Giaquinta, S. Mossa, G. Pellicane, A. Scala, F. W. Starr, and especially F. Sciortino for helpful suggestions and for interesting and stimulating discussions. We thank the NSF Chemistry Division (CHE-0096892) for support.

-
- [1] P. G. Debenedetti, *Metastable Liquids: Concepts and Principles* (Princeton University Press, Princeton, 1998); *Hydration Processes in Biology. Theoretical and Experimental Approaches*, Vol. 305 of *NATO Advanced Studies Institute, Series A: Life Sciences*, edited by M.-C. Bellissent-Funel (IOS Press, Amsterdam, 1998); G. W. Robinson, S. Singh, S.-B. Zhu, and M. W. Evans, *Water in Biology, Chemistry and Physics* (World Scientific, Singapore, 1996).
- [2] P. C. Hemmer and G. Stell, *Phys. Rev. Lett.* **24**, 1284 (1970); G. Stell and P. C. Hemmer, *J. Chem. Phys.* **56**, 4274 (1972); P. T. Cummings and G. Stell, *Mol. Phys.* **43**, 1267 (1981); E. Velasco, L. Mederos, G. Navascués, P. C. Hemmer, and G. Stell, *Phys. Rev. Lett.* **85**, 122 (2000); R. I. Beecroft and C. A. Swenson, *J. Phys. Chem. Solids* **15**, 234 (1960); J. M. Kincaid, G. Stell, and C. K. Hall, *J. Chem. Phys.* **65**, 2161 (1976); J. M. Kincaid, G. Stell, and E. Goldmark, *ibid.* **65**, 2172 (1976); J. M. Kincaid and G. Stell, *ibid.* **67**, 420 (1977); C. K. Hall and G. Stell, *Phys. Rev. A* **7**, 1679 (1973).
- [3] M. Silbert and W. H. Young, *Phys. Lett.* **58A**, 469 (1976); D. Levesque and J. J. Weis, *ibid.* **60A**, 473 (1977); J. M. Kincaid and G. Stell, *ibid.* **65A**, 131 (1978); J. M. Kincaid, G. Stell, and C. K. Hall, *J. Chem. Phys.* **65**, 2161 (1976); J. M. Kincaid, G. Stell, and E. Goldmark, *ibid.* **65**, 2172 (1976); A. Voronel, I. Paperno, S. Rabinovich, and E. Lapina, *Phys. Rev. Lett.* **50**, 247 (1983).
- [4] See, for example, W. M. Shyu, J. H. Wehling, and M. R. Cordes, *Phys. Rev. B* **4**, 1802 (1971); M. Appapillai and V. Heine, Cavendish Laboratory Technical Report No. 5, 1972 (unpublished); K. K. Mon, N. W. Ashcroft, and G. V. Chester, *Phys. Rev. B* **19**, 5103 (1979); G. Kahl and J. Hafner, *Solid State Commun.* **49**, 1125 (1984).
- [5] J. M. Lawrence, M. C. Croft, and R. D. Parks, *Phys. Rev. Lett.* **35**, 289 (1975).
- [6] See, for example, S. H. Behrens, D. I. Christl, R. Emmerzael, P. Schurtenberger, and M. Borkovec, *Langmuir* **16**, 2566 (2000); D. Wei and G. N. Patey, *Phys. Rev. Lett.* **68**, 2043 (1992); *Phys. Rev. A* **46**, 7783 (1992).
- [7] P. G. Debenedetti, V. S. Raghavan, and S. S. Borick, *J. Phys. Chem.* **95**, 4540 (1991).
- [8] F. H. Stillinger and T. Head-Gordon, *Phys. Rev. E* **47**, 2484 (1993); F. H. Stillinger and D. K. Stillinger, *Physica A* **244**, 358 (1997); T. Head-Gordon and F. H. Stillinger, *J. Chem. Phys.* **98**, 3313 (1993).
- [9] S. S. Borick, P. G. Debenedetti, and S. Sastry, *J. Phys. Chem.* **99**, 3781 (1995); T. M. Truskett, P. G. Debenedetti, S. Sastry, and S. Torquato, *J. Chem. Phys.* **111**, 2647 (1999).
- [10] M. R. Sadr-Lahijany, A. Scala, S. V. Buldyrev, and H. E. Stanley, *Phys. Rev. Lett.* **81**, 4895 (1998); *Phys. Rev. E* **60**, 6714 (1999); A. Scala, M. R. Sadr-Lahijany, N. Giovambattista, S. V. Buldyrev, H. E. Stanley, *ibid.* **63**, 041202 (2001); *J. Stat. Phys.* **100**, 97 (2000).
- [11] G. Franzese, G. Malescio, A. Skibinsky, S. V. Bulderez, and H. E. Stanley, *Nature (London)* **409**, 692 (2001).
- [12] G. Malescio and G. Pellicane, *Phys. Rev. E* **63**, 020501 (2001).
- [13] E. A. Jagla, *Phys. Rev. E* **58**, 1478 (1998); **63**, 061509 (2001); *J. Chem. Phys.* **111**, 8980 (1999).
- [14] E. A. Jagla, *Phys. Rev. E* **63**, 061501 (2001).
- [15] S. Buldyrev, G. Franzese, N. Giovambattista, G. Malescio, M.

- R. Sadr-Lahijany, A. Scala, A. Skibinsky, and H. E. Stanley, *Physica A* **304**, 23 (2002).
- [16] J. P. Hansen and I. R. McDonald, *Theory of Simple Liquids* (Academic Press, London, 1976).
- [17] D. Frenkel and B. Smit, *Understanding Molecular Simulation: From Algorithms to Applications* (Academic Press, San Diego, 1996); M. P. Allen and D. J. Tildesley, *Computer Simulation of Liquids* (Oxford University Press, New York, 1989).
- [18] Y. Katayama, T. Mizutani, W. Utsumi, O. Shimomura, M. Yamakata, and K. Funakoshi, *Nature (London)* **403**, 170 (2000); S. Falconi, M. Nardone, G. Monaco, and W. Crichton (private communication).
- [19] T. Morishita, *Phys. Rev. Lett.* **87**, 105701 (2001).
- [20] P. H. Poole, F. Sciortino, U. Essmann, and H. E. Stanley, *Nature (London)* **360**, 324 (1992); *Phys. Rev. E* **48**, 3799 (1993); H. E. Stanley, C. A. Angell, U. Essmann, M. Hemmati, P. H. Poole, and F. Sciortino, *Physica A* **206**, 122 (1994); F. Sciortino, P. H. Poole, U. Essmann, and H. E. Stanley, *Phys. Rev. E* **55**, 727 (1997); P. H. Poole, F. Sciortino, T. Grande, H. E. Stanley, and C. A. Angell, *Phys. Rev. Lett.* **73**, 1632 (1994); S. Harrington, R. Zhang, P. H. Poole, F. Sciortino, and H. E. Stanley, *ibid.* **78**, 2409 (1997); P. H. Poole, T. Grande, C. A. Angell, and P. F. McMillan, *Science* **275**, 322 (1997); M. Canpolat, F. W. Starr, A. Scala, M. R. Sadr-Lahijany, O. Mishima, S. Havlin, and H. E. Stanley, *Chem. Phys. Lett.* **294**, 9 (1998).
- [21] E. G. Ponyatovskii, V. V. Sinitsyn, and T. A. Pozdnyakova, *JETP Lett.* **60**, 360 (1994); H. Tanaka, *Nature (London)* **380**, 328 (1996); *J. Chem. Phys.* **105**, 5099 (1996); C. T. Moynihan, in *Structure and Dynamics of Glasses and Glass Formers*, edited by C. A. Angell *et al.*, *Mater. Res. Soc. Symp. Proc.* 455 (MRS, Pittsburgh, 1997), p. 411; C. A. Jeffery and P. H. Austin, *J. Chem. Phys.* **110**, 484 (1999).
- [22] M. van Thiel and F. H. Ree, *Phys. Rev. B* **48**, 3591 (1993); J. N. Glosli and F. H. Ree, *Phys. Rev. Lett.* **82**, 4659 (1999).
- [23] P. H. Poole, M. Hemmati, and C. A. Angell, *Phys. Rev. Lett.* **79**, 2281 (1997); D. J. Lacks, *ibid.* **84**, 4629 (2000); I. Saika-Voivod, F. Sciortino, and P. H. Poole, *Phys. Rev. E* **63**, 011202 (2001); I. Saika-Voivod, P. H. Poole, and F. Sciortino, *Nature (London)* **412**, 514 (2001).
- [24] C. A. Angell, S. Borick, and M. Grabow, *J. Non-Cryst. Solids* **207**, 463 (1996); S. Sastry and C. A. Angell (unpublished). For a review on liquid-liquid phase transitions, see *New Kinds of Phase Transitions: Transformations in Disordered Substances*, NATO Advances Research Workshop, Volga River, edited by V. V. Brazhkin, S. V. Buldyrev, V. N. Ryzhov, and H. E. Stanley (Kluwer, Dordrecht, 2002).
- [25] O. Mishima and H. E. Stanley, *Nature (London)* **396**, 329 (1998); **392**, 164 (1998); O. Mishima, *Phys. Rev. Lett.* **85**, 334 (2000).
- [26] M.-C. Bellissent-Funel, *Europhys. Lett.* **42**, 161 (1998); *Nuovo Cimento Soc. Ital. Fis., D* **20D**, 2107 (1998).
- [27] A. K. Soper and M. A. Ricci, *Phys. Rev. Lett.* **84**, 2881 (2000).
- [28] V. V. Brazhkin, E. L. Gromnitskaya, O. V. Stalgorova, and A. G. Lyapin, *Rev. High Pressure Sci. Technol.* **7**, 1129 (1998); V. V. Brazhkin, S. V. Popova, and R. N. Voloshin, *High Press. Res.* **15**, 267 (1997).
- [29] M. C. Wilding, P. F. McMillan, and A. Navrotsky, *J. Non-Cryst. Solids* **293**, 357 (2001).
- [30] J. R. Errington and P. G. Debenedetti, *Nature (London)* **409**, 318 (2001).
- [31] N. Guisani and V. B. Henriques, *J. Chem. Phys.* **115**, 5238 (2001).
- [32] J. M. J. Van Leeuwen, J. Groenvelde, and J. De Boer, *Physica (Amsterdam)* **25**, 792 (1959); G. S. Rushbrooke, *ibid.* **28**, 259 (1960); E. Meeron, *J. Math. Phys.* **1**, 192 (1960); T. Morita, *Prog. Theor. Phys.* **23**, 829 (1960); L. Verlet, *Nuovo Cimento* **18**, 77 (1960).
- [33] S. M. Foiles and N. W. Ashcroft, *Phys. Rev. A* **24**, 424 (1981).
- [34] P. D. Poll and N. W. Ashcroft, *Phys. Rev. A* **32**, 1722 (1985); **35**, 866 (1987); **35**, 5167 (1987).
- [35] L. Belloni, *J. Chem. Phys.* **98**, 8080 (1993).
- [36] J. S. Hoye, E. Lomba, and G. Stell, *Mol. Mater.* **79**, 523 (1993).
- [37] The equations of state can be obtained following three different routes [16]: by thermodynamic integration of K_T , by using the Clausius virial theorem, or by integration of the Maxwell relations between P , entropy, and total energy. As already known [16], due to the approximated nature of the HNC closure, the results of the three different routes do not coincide, i.e., the theory is thermodynamically inconsistent. The inconsistency can be partially removed by modifying the closure in such a way that it depends on a parameter. This parameter is usually fixed by requiring that the virial pressure is equal to the pressure calculated through the compressibility route. In this way a more accurate estimate of the spinodal line is obtained and, due to the thermodynamic consistency, also the binodal (or coexistence) line can be calculated. However the numerical procedures becomes much more computational-time consuming than the solution of the HNC equations without the thermodynamic consistency. Therefore, for an extensive investigation in the parameter space of the model potential, we choose to solve the integral equations in the HNC approximation without imposing thermodynamic consistency.
- [38] The overall shape of the instability line with two local maxima is consistent with the phase diagram derived by C. F. Tejero and M. Baus, *Phys. Rev. E* **57**, 4821 (1998) within a van der Waals approach for an effective density-dependent interaction potential.
- [39] D. C. Rapaport, *The Art of Molecular Dynamics Simulation* (Cambridge University Press, Cambridge, 1995).
- [40] H. J. C. Berendsen, J. P. M. Postma, W. F. van Gunsteren, A. Di Nola, and J. R. Haak, *J. Chem. Phys.* **81**, 3684 (1984).
- [41] It is known that in finite systems a first-order transition gives rise to a transition region rather than a transition line (well defined only in the thermodynamic limit) [17].
- [42] M. H. J. Hagen, E. J. Meijer, G. C. A. M. Mooij, D. Frenkel, and H. N. W. Lekkerkerker, *Nature (London)* **365**, 425 (1993); C. F. Tejero, A. Daanoun, H. N. W. Lekkerkerker, and M. Baus, *Phys. Rev. Lett.* **73**, 752 (1994); P. Rein ten Wolde and D. Frenkel, *Science* **277**, 1975 (1997).
- [43] G. C. A. M. Mooij, D. Frenkel, and H. N. W. Lekkerkerker, *Nature (London)* **365**, 425 (1993); P. Bolhuis and D. Frenkel, *Phys. Rev. Lett.* **72**, 2211 (1994).